

Wing40



CAME

SBB

SBB

MOTOR-POWERED
SWING-GATE
TURNSTILE



CAME

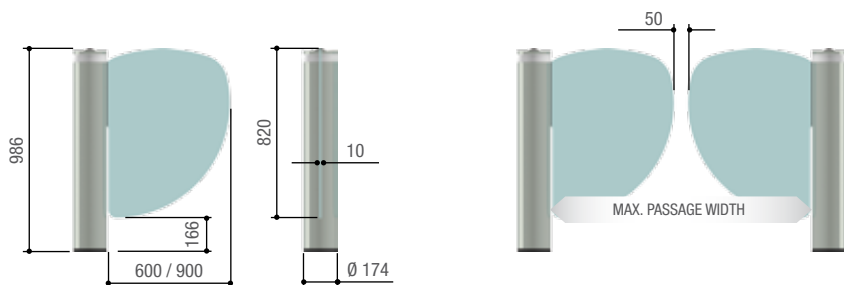
Elegant access.

Motor powered swing-gate turnstile. Elegant, harmonious and silent, are the benefits that make Wing40 especially suited to installing at hotel entrances, spas, gyms, banks, and art galleries.



Featuring an electronic board, power supply and electro-brake built into the operator in a diameter of just 168 mm.

Dimensions (mm)



Benefits that become solutions.

INNOVATION AND HARMONY

- A concentration of installation and functional aesthetic and technological solutions.
- Satin finished aluminium structure.
- Gate leaf anchored inside the operator.
- Designed to make passage easier for the physically challenged (version with the 900 mm long gate leaf).

DOUBLE PASSAGE

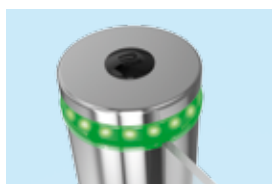
To manage especially wide pedestrian openings (up to 1,850 mm of passage width), it can be coupled with the Wing40. There are four available gate leaves, in either plexiglass or plate glass measuring 600 or 900 mm in length.

SAFE ACCESS AND MOVEMENT

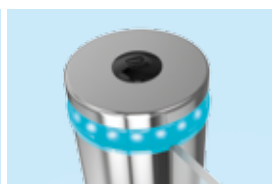
- Opens by push button, photocell or transponder and magnetic card.
- Featuring an electronic board, power supply and electro-brake built into the operator in a diameter of just 168 mm.
- Luminous warning crown announces movement of the gate leaf.
- Encoder technology.
- In case of blackouts, the reversible operator can be manually opened to both enter and exit.
- Adjustable internal mechanical stops.
- Memory roll to ensure memorization of settings and users.



THE LUMINOUS WARNING RED CROWN announces that the gate leaf is closing.



THE LUMINOUS WARNING GREEN CROWN announces the opening of the gate leaf.



THE LUMINOUS WARNING BLUE CROWN announces that the gate leaf is closing (the pre-flashing time can be electronically adjusted).



Guaranteed by 24 Volts

Systems running at 24 Volts are super safe to use and very reliable under intense working conditions, such as those found at residential apartment complexes and industrial facilities. Moreover, 24 Volt systems work even during power outages, thanks to the optional batteries.



Read up at came.com about the full range of Came products!

Came is a market leading home, industrial, and special technological projects automation manufacturing company.

A full range of household solutions: from operators for gates and garage doors, to shutter and awning winding motors, and even home automation control, to burglar proof and video entry systems. Technology and reliability to serve your business, thanks to solutions designed for powering large industrial doors, automatic doors, street barriers, turnstiles, access control systems and parking facilities.





MODEL

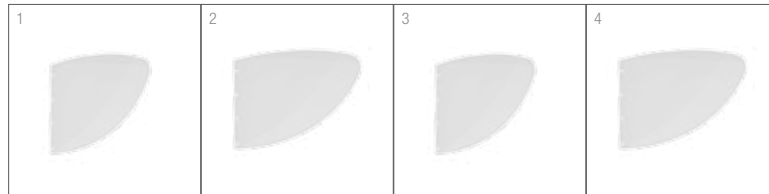
PSWNG40

Protection rating (IP)	40
Power supply (V - 50/60 Hz)	120 - 230 AC
Operating power supply (V)	24 DC
Opening speed at 90° (s)	1
Power (W)	120
Operating temperature (°C / °F)	-20 ÷ +55 / -4 ÷ +131

● 24 V DC

SOME VERSIONS MAY NOT BE AVAILABLE IN YOUR COUNTRY. FOR MORE INFORMATION PLEASE CHECK WITH YOUR LOCAL AUTHORIZED DEALER.

DEDICATED ACCESSORIES



1. Plexiglass gate-leaf L = 600 mm Thk. = 10 mm.
2. Plexiglass gate-leaf L = 900 mm Thk. = 10 mm.
3. Plate glass gate leaf L = 600 mm Thk. = 10 mm.
4. Plate glass gate leaf L = 900 mm Thk. = 10 mm.

SYSTEM'S COMPLEMENTARY ELEMENTS



1. Monodirectional safety barrier for cart transit. Available with two, three or four arches.
2. Floor anchored safety barrier in AISI 304 stainless steel with polycarbonate panel; thickness 6 mm (0.23 in). H = 900 mm (35.4 in).
3. Floor anchored safety barrier in AISI 304 stainless steel without panel. H = 900 mm (35.4 in).
4. AISI 304 stainless steel safety barrier with antipanic handle. Available with left or right hand post. L = 900 or 1,200 mm (35.4 or 47.2 in), H = 1,000 mm (39.3 in).
5. Galvanized steel riser with anchoring flange and chromed plastic flange cover. H = 980 mm (38.6 in). Available without holes, with 2 holes, with 2+2 90° or 180° holes, with 6 holes, with 8 holes.
6. AISI 304 stainless steel riser plus anchoring flange and flange cover. H = 980 mm (38.6 in). Available without holes, with 2 holes, with 2+2 90° or 180° holes, with 6 holes, with 8 holes.
7. Transparent polycarbonate panel 6 mm thick. L = 750 mm (29.5 in), H = 800 mm (31.5 in).
8. AISI 304 stainless steel riser. H = 900 mm (35.4 in), Ø 80 mm (3.15 in). Available without clips, with 2 clips, with 2+2 90° or 180° clips, with 6 clips, with 8 clips.
9. Joining sleeves. Available in chromed plastic, AISI 304 stainless steel and AISI 304 stainless steel specifically for wall mounting.
10. Horizontal tube for AISI 304 stainless steel safety barriers. Ø 40 mm (1.57 in) thickness 1 mm (0.04 in). Available in several measurements: 500, 1,000, 1,500, 2,000 mm (19.7, 39.4, 59.1, 78.7 in).



GARANZIA QUALITÀ ORIGINALE

Came products are entirely designed and made in ITALY



Came S.p.A. is Quality and Environmentally certified by UNI EN ISO 9001 UNI EN ISO 14001



© CAME SPA - KDEP#CEN2CA3S114 - JAN_2014 - EN

Even partial reproduction is prohibited • Came reserves the right to make any changes to this document at any time



Came S.p.A.

Via Martiri della Libertà, 15
Dossone di Casier
Treviso - Italy

www.came.com

Came is a company of
CAMEGROUP