

Where style come

# Gard 8



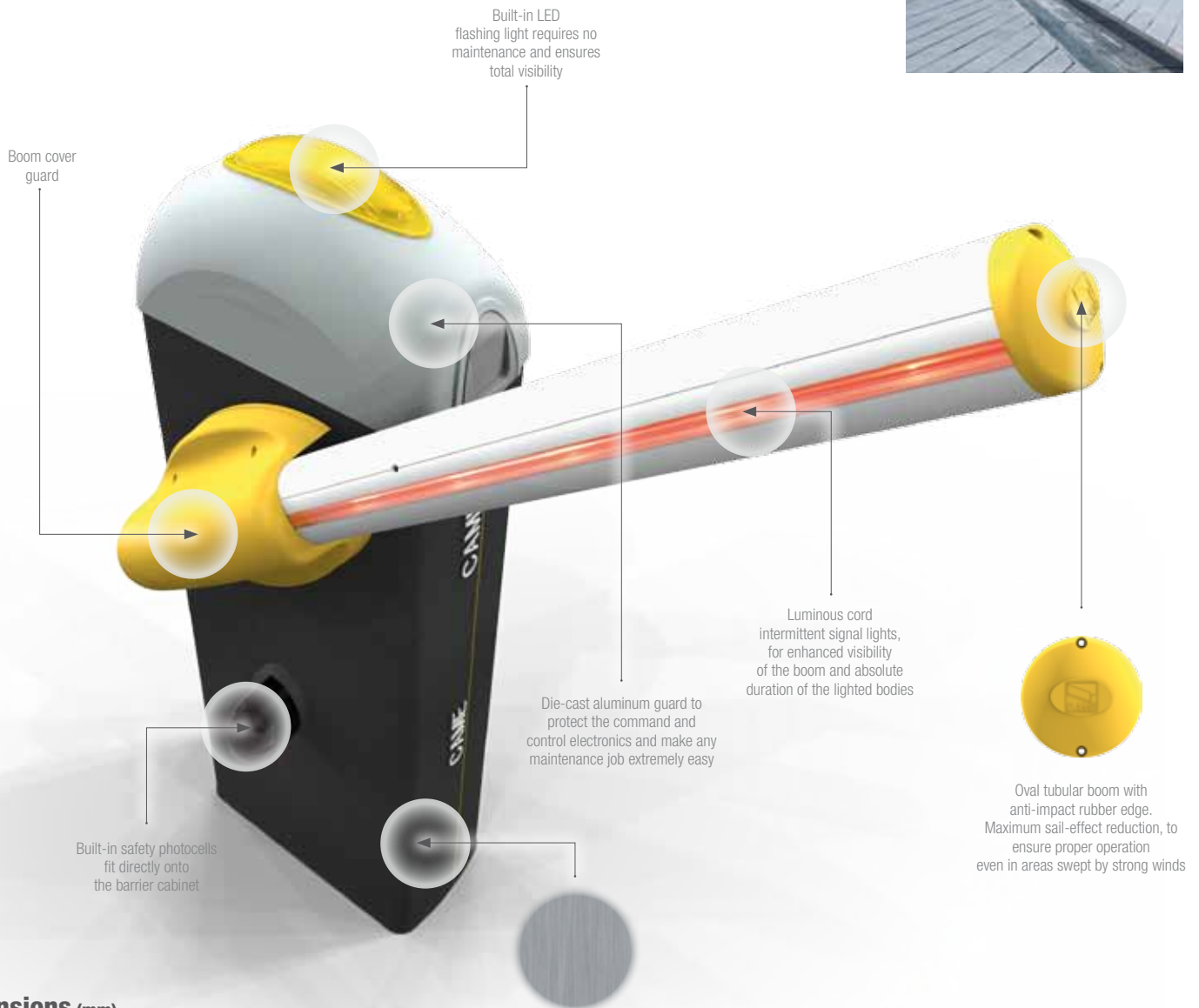
AUTOMATIC BARRIER  
FOR PASSAGE WIDTHS  
OF UP TO 7.6 M  
(24.9 FT)



**CAME**

# The barrier for large openings at industrial and collective settings.

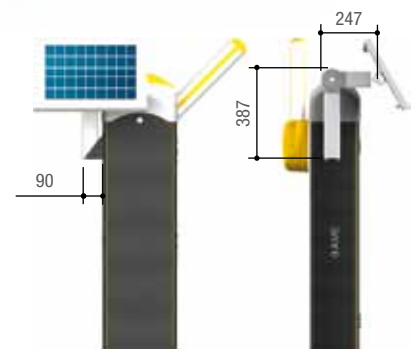
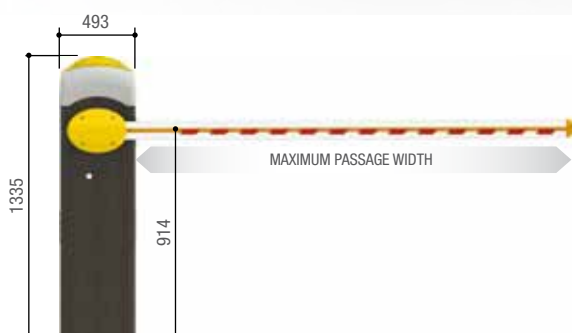
The Gard 8 series of barriers is specific for passage widths of up to 7.6 m (24.9 ft). Soft edges and rounded corners make for an ideal solution at large access points.



## Dimensions (mm)

Gard 8 is also available with AISI 304 satin-finish stainless steel cabinet, mod: **G2080IZ - G2080IE**

Applying the 001ZERO-E01 solar panel



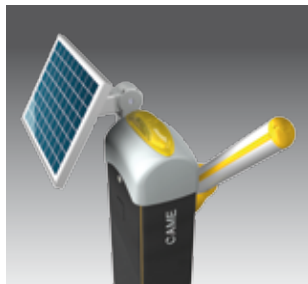
# Benefits that become solutions.

## TOTAL CONTROL

The Gard 8 series is available in various models, all with built-in control panel. The electronics feature encoder technology for controlling the boom and detecting any obstructions. A quick self-diagnosis of the safety devices is performed before the operator even starts to move, thus boosting and improving its standard control and safety features.

## GLOBAL ENTRY POINT CONTROL

Each automatic barrier of the Gard 8 series, can be connected to different Came access control systems for identifying, memorizing and enabling entry or exit only to authorized personnel.



## SIMPLICITY AND SAVINGS

Gard 8 also comes in the version fitted with "Sleep Mode" technology that optimizes electric energy consumption to a minimum when the motor is idle. Also, it is compatible with the new Zero-E solar power panel so that the barrier can work even in areas that are not serviced by electric current.

## UNSNAPPING BOOM SUPPORT JOINT



### STANDARD

After impact, the end of the unsnapped boom rests on the ground.



### PLUS

After impact, the unsnapped boom rotates 90° and the end rests on the ground.



## Guaranteed by 24 Volts

Systems running at 24 Volts are super safe to use and very reliable under intense working conditions, such as those found at residential apartment complexes and industrial facilities. Moreover, 24 Volt systems work even during power outages, thanks to the optional batteries.



## Read up at [came.com](http://came.com) about the full range of Came products!

Came is a market leading home, industrial, and special technological projects automation manufacturing company.

A full range of household solutions: from operators for gates and garage doors, to shutter and awning winding motors, and even home automation control, to burglar proof and video entry systems. Technology and reliability to serve your business, thanks to solutions designed for powering large industrial doors, automatic doors, street barriers, turnstiles, access control systems and parking facilities.





## CUSTOMIZED ELECTRONICS FOR YOUR NEEDS!

Gard 8 is available in the 24 V DC versions.

The table shows the main control panel characteristics matched to the gearmotors.



GARANZIA QUALITÀ ORIGINALE  
Came products  
are entirely designed  
and made in ITALY



Came S.p.A.  
is Quality  
and Environmentally certified by  
**UNI EN ISO 9001**  
**UNI EN ISO 14001**

MODEL	G2080E	G2080Z
	G2080IE	G2080IZ
<b>CONTROL PANEL</b>	ZL39	ZL38
<b>SAFETY FEATURES</b>		
SELF-DIAGNOSING safety devices	●	
PREFLASHING while opening or closing	●	●
REOPEN while closing	●	●
WAIT obstruction	●	
TOTAL STOP	●	●
OBSTRUCTION DETECTED in front of photocells	●	●
ENCODER	●	
Device for CONTROLLING MOVEMENT and DETECTING ANY OBSTRUCTIONS	●	
AMPEROMETRIC DETECTION	●	●
<b>CONTROL FEATURES</b>		
OPEN ONLY from transmitter and/or button	●	●
OPEN ONLY or CLOSE ONLY button connection	●	●
OPEN-CLOSE-INVERSION from transmitter and/or from button	●	●
MAINTAINED ACTION	●	●
IMMEDIATE CLOSING	●	●
<b>CHARACTERISTICS AND ADJUSTMENTS</b>		
FLASHING LIGHT connection	●	●
CYCLE LAMP connection	●	
COURTESY LAMP connection	●	
Antenna	●	●
GATE OPEN FLASHING LIGHT connection	●	●
OPERATING TIME adjustment	●	
SELF-LEARNING of the transmitter's RADIO CODE	●	●
Adjustable AUTOMATIC RECLOSING TIME	●	●
OPENING and/or CLOSING slow down	●	●
EMERGENCY BATTERY operation (optional)	●	●
MASTER-SLAVE	●	●
Adjustable TRAVEL and SLOW DOWN speeds	●	●
DISPLAY	●	
Electronic brake		●
SELF-LEARNING opening and closing limit-switches	●	
SLEEP MODE	●	
Connecting to the solar panel	●	

● 24 V DC

MODEL	G2080Z • G2080IZ • G2080E • G2080IE
Protection rating (IP)	54
Power supply (V - 50/60 Hz)	230 AC
Power supply to motor (V - 50/60 Hz)	24 DC
Draw (A)	15 Max.
Power (W)	300
Opening time at 90° (s)	4 ÷ 8
Duty cycle (%)	INTENSIVE USE
Torque (Nm)	600
Operating temperature (°C / °F)	-20 ÷ +55 / -4 ÷ +131
Motor's heat protection (°C / °F)	-

● 24 V DC

### LIMITS TO USE (MAXIMUM PASSAGE WIDTH)

7.60 m 24.9 ft	G2080Z	G2080IZ	G2080E	G2080IE
	●	●	●	●

● 24 V DC

SOME VERSIONS MAY NOT BE AVAILABLE IN YOUR COUNTRY. FOR MORE INFORMATION PLEASE CHECK WITH YOUR LOCAL AUTHORIZED DEALER.



© CAME SPA - KDEP#CEN20A3S114 - JAN 2014 - EN

Even partial reproduction is prohibited • Came reserves the right to make any changes to this document at any time



Came S.p.A.

Via Martiri della Libertà, 15  
Dossone di Casier  
Treviso - Italy

www.came.com

Came is a company of  
**CAMEGROUP**